

CREATE YOUR PIVOTAL PRACTICE

2018-2019 EQUIPMENT CATALOG



PHSChiropractic
by Pivotal Health Solutions

www.PHSChiropractic.com

Making the Best **BETTER**

PHS Chiropractic by Pivotal Health Solutions was formed with the mission of being the leading manufacturer of quality built, ergonomically sound chiropractic adjusting tables. Over the course of the past thirteen years, PHS Chiropractic has become one of the most comprehensive, quality-built and ergonomically sound chiropractic adjusting table lines on the market today. All PHS Chiropractic Tables are proudly engineered and built in America.

Let PHS Chiropractic make your best, better!

The ErgoStyle Family

Our ErgoStyle tables offer the highest quality and the most effective drops in the industry. The seamless elevation and easy upgrades are perfect for any practice. The ErgoStyle's modular design allows for easy modifications and upgrades in the field, now or later as your techniques and practice grows. Our patented ErgoStyle drops elevate across the entire table cushion, allowing for improved accuracy and effortless adjustment.



PHS Chiropractic is constantly looking to improve our products.

We've updated our head cushions for supplemental comfort, improved our drops, and updated our table designs for a modern and sleek look.

Our innovative, high-quality, and feature-rich products continue to lead the chiropractic field. Whether you're looking to add a DOC Decompression Table, an iTrac® Spine Remodeling System or a basic essential table, we've got you covered.

Product Innovation

The **ME2002 Elevating Table - The Bolt** is our newest table designed specifically for doctors. Built with the highest standards of quality, integrity and innovation, the ME2002 allows each practitioner to work more effectively. The ME2002's pelvic drop, elevating ankle extender and its Instrument Adjusting Technique capabilities make it the most versatile table on the market.

The **HYLO IAT Elevating Table** has multiple innovative features such as an elevating ankle extension, an electric fall-away foot plate, 26" handles below the cushion, and a caster system for easy movement. The all new HY2002 has a sleek base with high density foam and the elevating height ranges from 20" to 34," making it ADA compliant. Add a pelvic drop for additional treatment options.

PHS Chiropractic is here to cover every element of your practice. Our new **kiosks** provide the finishing touch to every lobby or treatment space. Each kiosk provides abundant space for all your materials, and the drawers and pullout shelves offer efficient storage options.



HY2002
HYLO IAT
Elevating Table



Kiosks



ME2002 Elevating
Table - The Bolt

NEW PRODUCTS

ErgoStyle™

ES2000

GEN II



Pivotal Points



Headpiece: Tilt, Elevation, Forward Drop, Toggle Drop, Adjustable Face Cushion Option



Auto-Cocking Drop Option (Includes Thoracic, Lumbar & Pelvic Drops)



Full Length Patented Accelerator III Drops

ES2000 GEN II ES9300

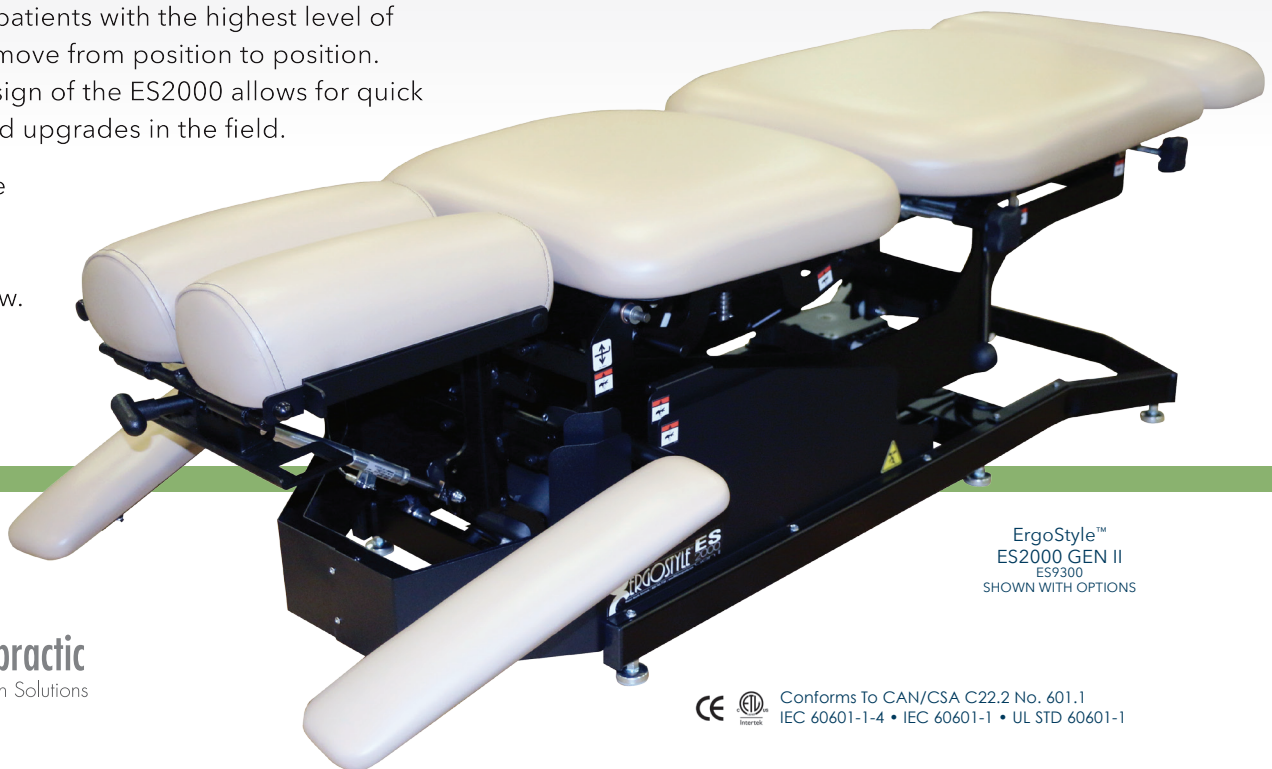
Elevating Adjusting Treatment Table

ES2000 GEN II ES9320

Elevating Adjusting Treatment Table with 3 Auto-Cocking Drops

ErgoStyle™ ES2000 Gen II changes how all adjusting tables are viewed. The ES2000 is ergonomically designed to meet the physical needs of the clinician while providing patients with the highest level of comfort as they move from position to position. The modular design of the ES2000 allows for quick modifications and upgrades in the field.

Upgrades can be added later as your techniques and practice grow.



ErgoStyle™
ES2000 GEN II
ES9300
SHOWN WITH OPTIONS

FEATURES:

- Lifting capacity: 400 lbs.
- Overall dimensions: 70"L x 28"W x 20-32"H
- Extended maximum length: 76"L
- Electric elevation from 20-32"
- Single foot pedal for elevation
- Telescoping covers over lifting mechanism
- Tilting headpiece with adjustable sewn face cushions
- 23" wide seamless cushions with multi-density foam
- Locking 6" extending ankle rest
- Stationary chest
- Fixed pelvic section
- Paper roll holder and cutter
- Durable powder-coated finish
- Dual auto-cocking foot pedal included with auto-cocking drops
- ADA compliant



Visit our website for complete table details.
www.PHSChiropractic.com

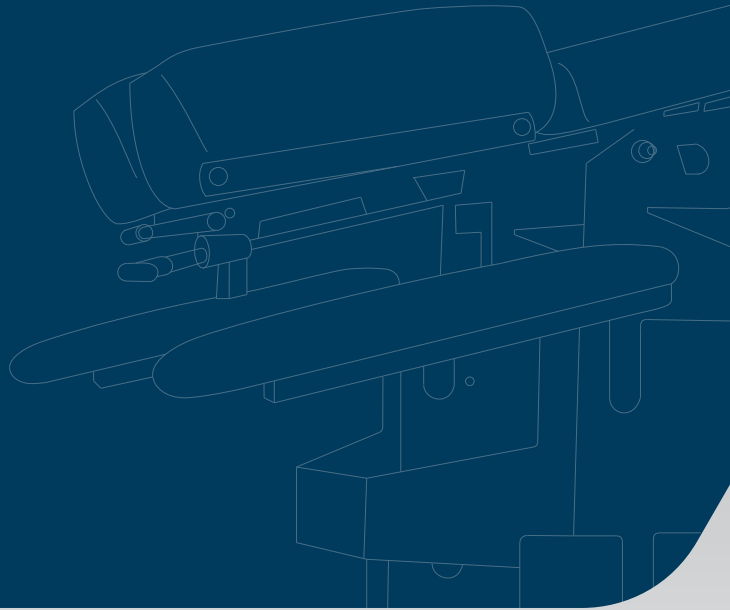
14° Lateral
Flexion
Option



VERSATILE, SMOOTH & ERGONOMIC

ErgoStyle™ FX

ErgoStyle™ FX Counterbalanced Flexion addresses the core needs of chiropractors. The ErgoStyle™ FX table is a sophisticated table that offers full, ultra smooth, counterbalanced flexion at its lowest height of 20" and quietly elevates to its full height of 32". The new design offers infinite variable electric spring tension distributed in such a way that allows for fingertip effort in moving the caudal section in any direction.



ErgoStyle™ FX. ES5820

Elevating Manual Flexion Distraction Table

ErgoStyle™ FX. ES5822

Elevating Manual Flexion Distraction Table
with 3 Auto-Cocking Drops

DESIGNED FOR THE DOCTOR:

SMOOTHER ADJUSTMENTS WITH LESS FORCE --
FOR LESS STRESS ON YOU & YOUR PATIENTS

Visit our website for complete table details.

www.PHSChiropractic.com



Pivotal Points

FEATURES:

- Lifting capacity: 400 lbs.
- Overall dimensions: 70"L x 28"W x 20-32"H
- Extended maximum length: 78"L
- Electric elevation from 20-32"
- Single foot pedal for elevation
- Expanding covers over lifting mechanism
- Tilting headpiece with adjustable sewn face cushions
- 23" wide seamless cushions with multi-density foam
- Manual flexion/distraction (Flexion: 15°; Extension: 12°; Side Bending: 30° total)
- Single tension foot pedal (manual flexion only)
- Locking 8" extending ankle rest with ankle cuffs
- Stationary chest
- Paper roll holder and cutter
- Durable powder-coated finish
- Single auto-cocking foot pedal included with auto-cocking drops
- ADA compliant



Standard Ankle Extension with Ankle Straps



Headpiece: Tilt, Elevation, Forward Drop, Toggle Drop, Adjustable Face Cushion Option



Breakaway Chest Option with Single or Dual Side Control

14° Lateral Flexion Option



ErgoStyle™ FX
ES5820
SHOWN WITH OPTIONS



Conforms To CAN/CSA C22.2 No. 601.1
IEC 60601-1-4 • IEC 60601-1 • UL STD 60601-1

ErgoStyle™ HYLO

ErgoStyle™ HYLO is a revolutionary adjusting table with many standard features previously considered upgrades. Improved ergonomics include: bilateral control placement, powered front and pelvic sections, free falling Accelerator™ III Drops, and gas spring assist on headpieces, chest and pelvic cushions.

ErgoStyle™ HYLO ... EH9510 Standard HYLO Table

ErgoStyle™ HYLO ... EH9530 HYLO Table with 3 Auto-Cocking Drops

FEATURES:

- Lifting capacity: 400 lbs.
- Overall dimensions: 64"L x 28"W x 23.5"H
- 23.5" fixed table height
- 64-78" adjustable table length
- 0-63° tilting
- Tilting mechanism: Gear drive hydraulics with a "soft stop" in the down position
- Single foot pedal for tilt mechanism
- Single side controls to power chest and pelvic extensions
- Controlled safety system: 2-Step tilt-down control
- Tilting headpiece with adjustable sewn face cushions
- Stationary chest
- Fixed pelvic section
- Fixed ankle rest with foldaway footplate
- 23" wide seamless cushions with multi-density foam
- Paper roll holder and cutter
- Durable powder-coated finish
- Single auto-cocking foot pedal included with auto-cocking drops
- ADA compliant

"We decided to purchase a Pivotal HYLO table and have been over the top satisfied from day one! We love the ability of the table to go fully upright to accommodate all types of patients. With the table having the ability to go from upright to flat affords us the opportunity to care for the acute type of patients. In comparison to any other table I have used in over 20 years of practice this table is #1! Having this table has helped grow my practice by giving me the flexibility to treat acute and elderly patients without having them "climb" onto a table. As a result of seeing these types of patients they have commented how much they appreciate me having this option for them. I would suggest every office offer a HYLO table from Pivotal Health."

Dr. David Timmerman, D.C.

Advanced Chiropractic & Wellness



Visit our website for complete table details.

www.PHSChiropractic.com

ErgoStyle™ HYLO
EH9510
SHOWN WITH OPTIONS

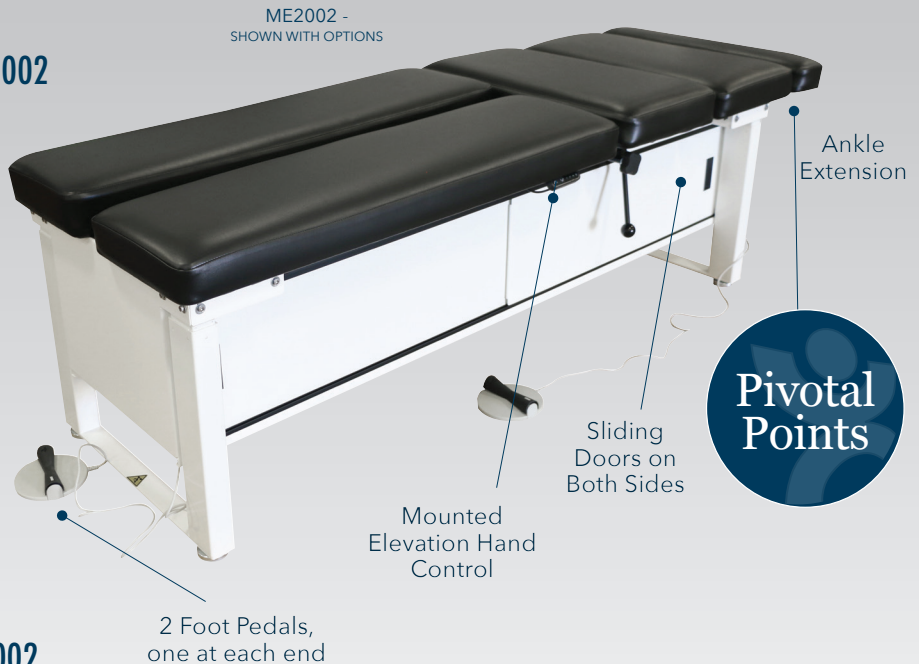
Instrument Adjusting Tables

The **ME2002 Elevating Table - The Bolt** has been specifically designed for doctors of chiropractic allowing them to effectively treat each patient. This dynamic table has been designed and built with the highest standards of quality, integrity, and innovation. With its quiet and smooth elevation at a range of 24" to 36", the ME2002 allows each practitioner to eliminate the constant squatting and bending while treating patients, leaving them with more energy at the end of the day.

ME2002 Elevating Table - The Bolt . . . ME2002

FEATURES:

- Lifting capacity: 400 lbs.
- Overall dimensions: 80"L x 28"W x 24-36"H
- Height ranges from 24" to 36"
- 3" high density foam cushion with face opening
- White powder coated steel base
- 2 sliding doors on each side of table
- Ankle extension cushion elevates 3.5"
- 2 foot pedals (1 on each end)
- 1 mounted hand control



HY2002 HYLO IAT Elevating Table . . . HY2002

FEATURES:

- Lifting capacity: 350 lbs.
- Overall dimensions: 80"L x 28"W x 20-34"H
- Height ranges from 20" to 34"
- 3" high density foam cushion with face opening
- 0-63° tilting
- Ankle extension cushion elevates 3.5"
- White powder coated steel base
- 1 hand control operates table elevation and HYLO tilt mechanism
- Electric fall-away foot plate
- 26" handles below cushion
- Caster system for easy movement
- ADA compliant

Visit our website for complete table details.

www.PHSChiropractic.com

The **HY2002 HYLO IAT Elevating Table** has multiple innovative features such as an elevating ankle extension, an electric fall-away foot plate, 26" handles below the cushion, and a caster system for easy movement. The all new HY2002 has a sleek base with high density foam and the elevating height ranges from 20-34", making it ADA compliant. Add a pelvic drop for additional treatment options.

HY2002
SHOWN WITH OPTIONAL PELVIC DROP



NEW PRODUCTS

 **PHSChiropractic**
by Pivotal Health Solutions

TradeMark SERIES

TradeMark E9012 Adjusting Table

FEATURES:

- Adjustable face cushions
- Extension / flexion headpiece
- Paper roller, cutter & guide bar
- 8" ankle extension with elevation
- Breakaway & elevating abdominal
- Elevation: 20-28"
- Lifting capacity: 350 lbs.
- Length: 65"
- Extended length with ankle extension: 73"

The **TradeMark Adjusting Table** is a quality engineered table designed as an affordable option for any budget. The list of standard features is impressive in itself, but the TradeMark's capabilities doesn't end there. Add our quality thoracic and lumbar chest cushion, a pelvic drop cushion, height, elevation and multiple headpieces to meet your practice needs and desires.

AN AFFORDABLE CHOICE FOR YOUR PRACTICE

Visit our website for complete table details.
www.PHSChiropractic.com



Pivotal
Points

Breakaway &
Elevating
Abdominal



PHSChiropractic
by Pivotal Health Solutions

E9012 TradeMark
SHOWN WITH OPTIONS

TradeFlex SERIES

TradeFlex E9017
Manual Flexion Table

TradeFlex E9018
Auto Flexion Table

FEATURES:

- P/A flexion (15°)
- Ankle extension: 10"
- Black base
- Lifting capacity: 350 lbs
- Length: 73"
- Rear lateral flexion (+/- 15°)
- Breakaway abdominal
- 23" wide comfort cushions
- Paper roller, cutter & guide bar
- Elevation: 21-29"
- Extended length with ankle extension: 83"

The **TradeFlex Series** features electric tension controls and optional cervical, thoracic, lumbar and pelvic drops, and the ability to perform figure 8 range of motion. The pelvic drop can be used in any position. We now offer thoracic and lumbar drops in a single chest cushion. Lock the P/A and lateral flexion in any position.

The table also features a smooth range of +/- 15 degrees of lateral flexion and a flexion depth of 15 degrees to accommodate almost any angle of drive. A removable flexion control t-bar allows the doctor to move freely around the table which improves patient and doctor comfort. The TradeFlex table allows the doctor to perform optimum correction of spinal subluxations or disc problems, yet can still function as an exam, adjusting or therapy table. This versatility will save the doctor time and money. This workhorse table is also available with an electric flexion option that offers variable flexion speed and treatment timer.

E9017 Manual Flexion
SHOWN WITH OPTIONS



T-Bar Assist
Handle

Electric Spring Tension

Pivotal
Points

"The TradeFlex Manual Flexion/Decompression table offers drops and headpieces that accommodate to different heights, elevation and even long-axis distraction. We are able to treat patients of all ages, many different cases and symptoms with all the features on our new equipment, and can treat expecting mothers also! Many tension controls and removable flexion control t-bar that allows myself to move freely around the table while treating all my patients. All our patients will benefit from the ability to perform figure-8 range of motion traction, a smooth range of 15 degrees of lateral flexion and a flexion depth of 15 degrees to accommodate almost any angle for adjustments. This table also offers so much versatility allowing for optimum correction of spinal/extremity misalignments or disc and compression issues (sciatica, degenerative disc disease, etc...) yet still functioning as an exam, adjusting, and therapy table."

Dr. Galen Stolp

Integrated Chiropractic and Rehab



Auto Flexion Table
SHOWN WITH OPTIONS

VERSATILITY:
Exam, Adjust, Therapy

ErgoStyle™ Benches



Fixed Top ErgoBench Soft Foam EB9020

Fixed Top ErgoBench Firm Foam EB9030

Tilt Head ErgoBench Soft Foam EB9000

Tilt Head ErgoBench Firm Foam EB9010

FEATURES:

- Unitized steel frame
- Seamless cushions
- Multi-fit arm rests
- Paper roll holder and cutter
- Bottleneck shape
- Available in soft or firm foam
- Height Range 18" - 24"
- Capacity: 350 lbs



The **ErgoBench** brings uncompromised stability and style to any office at an affordable price. It has an 18" to 24" height adjustment and features a unitized steel frame with a bottleneck shape, seamless cushions, multi-fit arm rests, and a paper roll holder and cutter. It is also available with a comfortable and easily adjustable tilt headpiece. Ships with unassembled legs. The ErgoBenches can be shipped completely assembled for an additional charge.

ErgoBasic Soft Foam . . . EB9040

ErgoBasic Firm Foam . . . EB9050

FEATURES:

- Tilt headpiece
- Accelerator™ III pelvic drop
- Paper roll holder and cutter
- Unitized steel frame
- Seamless cushions
- Available in soft or firm foam
- Shipped fully assembled
- Height Range 18" - 24"
- Capacity: 350 lbs

The **ErgoBasic benches** possess a critical mix of features admired by many practitioners. A tilt head and accelerator pelvic drop are standard features. Optional extras include an upgradeable headpiece, allowing operation of tilt, adjustable face opening, forward drop, elevation and toggle drop. ErgoBasic is sleek, elegantly simple, yet affordable.



EB9040
ErgoBasic Tilt Headpiece Soft Foam

EB9040
ErgoBasic Soft Foam with optional headpiece

EB Benches

EB Bench Tilt Head EB8000
EB Bench Fixed Top EB8020

FEATURES:

- Comfortable, easy to use, adjustable face rest
- 2" Firm Foam
- Ships UPS or FedEx
- Weight capacity: 600 lbs.
- Height: 22" fixed
- Width: 24"
- Length: 73"
- Black powdercoat steel frame
- Seamless cushions with folded cushion edges
- Optional Shelf - 16"x53"



EB8000

EB8020
WITH SHELF OPTION

The **EB Benches** offer stability and style, plus a firm and workable adjusting surface - all at an affordable price. The benches also feature seamless cushions, extended arm rests to fit a wide range of patients and a paper roll holder and cutter. A 16" wide shelf may also be added under the bench. The Tilt Head Bench and Fixed Top Bench ship unassembled. This bench can be shipped completely assembled for an additional charge.

Metal DROP TABLE Z2051

Height Options: 18"-19" 20"-21"
22"-23" 24"-26"

Our Metal Drop Table with its classic design offers an affordable way for you to start your practice.

FEATURES:

- Stationary face cushion
- Extension/flexion headpiece
- Paper roller, cutter and guide bar
- Comfort cushions
- Ankle extension
- Table dimensions: 71.5" L x 21.5" W
- Black base

OPTIONS:

- Lumbo-Pelvic drop
- Thoracic drop
- Chest prop
- Knee break
- Pelvic drop prop
- Locking ankle
- Right side tension on lumbo-pelvic and thoracic drop



**Pivotal
Points**

Headpiece Option:
Tilt, with stationary face cushions

Z2051 Metal Drop Table
SHOWN WITH OPTIONS

CREATE YOUR PIVOTAL PRACTICE



DOC
DECOMPRESSION



iTRAC SPINE
REMODELING
SYSTEM



APOLLO
COLD
LASERS



WHOLE BODY
VIBRATION



MASSAGE &
PHYSICAL
THERAPY TABLES

Every PHS Chiropractic product is made to help your practice succeed. From our adjusting tables to our intersegmental roller tables and benches, DOC Decompression Table and iTrac Spine Remodeling System, **our product innovation doesn't end there.**

Intersegmental Roller Tables

ROLLER MASSAGE TABLE..... ATT-300

Roller Massage Table
Dimensions: 72"L x 22"W x 25"H

FEATURES:

- Clockwise and counter-clockwise rotation
- Travel indicator
- Automatic lowering device
- Adjustable massage pressure
- Vibration
- LED roller height indicator
- 30-minute timer
- Cervical and knee bolsters
- Roller height adjustment 4"
- Capacity: 350 lbs

ATT-300
STANDARD
22" WIDE TOP



ATT-300
OPTIONAL 25" WIDE TOP
SHOWN WITH CERVICAL
AND KNEE BOLSTERS

The **ATT-300 Intersegmental Roller Massage Table** was specially designed for pretreatment therapy and massage. Under its thick, padded lounge top, three large rotating rollers travel back and forth, kneading the muscles in the neck, shoulders or lower back.

ErgoWave.....EW9080

Roller Massage Table
Dimensions: 78"L x 25"W x 24"H

FEATURES:

- Triple rollers mounted on three axles to isolate lumbar, thoracic and cervical regions
- Quick height adjustments - a gas spring makes roller height adjustments quick and easy
- Ultra-quiet operation - high quality motor for nearly silent operation without annoying vibrations
- Built-in storage shelf
- A welded steel frame ensures stability
- Roller height adjustment 3"
- 30-minute timer
- Capacity: 350 lbs

Unique Wave Action - The **ErgoWave** roller pattern travels up the spine like a wave. All areas of the patient's spine are covered with three independent rollers repeating every 13 seconds.



EW9080
ErgoWave
SHOWN WITH OPTIONAL KNEE BOLSTER

DOC DECOMPRESSION



DOC Decompression. . E9011-B

120V Targeting of Axial
Rotation and Lateral Flexion

DOC Decompression. . E9014-B

230V Targeting of Axial
Rotation and Lateral Flexion

FEATURES:

- Digital Command Center which includes:
 - Specific vertebral targeting
 - Interactive color display
 - Separate lumbar and cervical decompression programming
 - Continuous readout and graphing of treatment parameters
- Pre-programmed lumbar and cervical decompression protocols
- Traction belting system can enhance restraint for optimal decompression
- Axial Rotation and Lateral Flexion can be done simply with the press of a button and manipulation of the guide bar at the rear of the pelvic section. The doctor or practitioner can move the flexing section to its proper position such as lateral flexion or axial rotation. This is unlike other units that have a direct and straight pull only. In addition, this system comes with P-A flexion capabilities.
- Reference library - including patient setup and training materials
- Cervical capture headpiece
- Customizable treatment protocols
- Lifting capacity: 350 lbs
- User-defined treatment hold and relax times
- Speed control
- Expanded customizable protocols
- Table elevation
- Real-time digital treatment tracking
- Comfort cushions
- Height Range: 21-29"

**THE ABILITY
TO CORRECTLY
POSITION
PATIENTS IN
ANTALGIC POSTURE**



Tower DOC E9015

230V Targeting of Axial
Rotation and Lateral Flexion

Tower DOC E9022

120V Targeting of Axial
Rotation and Lateral Flexion



**Free 90 Days
of Clinical
Support** with
Dr. Bryan

Hawley included
with purchase.

Pivotal Points

TABLE ELEVATION: A 21" to 29" range allows for customizable working height and accompanies a variety of patient body types.

VIRTUAL COMMAND CENTER: 8" sleek, digital, color display slides to either side of the table.

Digital Command Center with Preprogrammed Options

Adjustable Headpiece

Knee & Cervical Bolster Set

CERVICAL CAPTURE HEADPIECE:

Fully adjustable with the perfect combination of secure fit and patient comfort. Less discomfort, slipping, and pressure than other decompression systems.

PATIENT SAFETY SWITCH:

Safety feature allowing a patient to immediately stop the treatment due to pain, spasm or discomfort.

Adjustable Arms



Axial Rotation



Lateral Flexion



P-A Flexion



SECURE FIT PELVIC CAPTURE SYSTEM: The pelvic capture system securely captures the pelvis for a variety of body types providing just the right combination of fit and comfort.



"The DOC Decompression Table has been a huge asset to my practice. It has given me leverage I didn't have before. I am able to treat patients I would otherwise have to refer out as well as produce results I would not have been able to produce without the DOC table. It has allowed me to further grow my practice and stick out in the community. The table is comfortable to the patients and user friendly. I highly recommend this decompression table to anyone looking to further grow their practice, get better results or stand out in their community." **Dr. Kayla, Louisiana**

iTrac® Spine Remodeling System

iTrac Package (includes cart and computer)

iTrac..... T9000

120V

FEATURES:

- Table Dimensions: 48" L x 23" W x 43" H
- Cart Dimensions: 24"W x 18"D x 38"H
- Preloaded 15" laptop with a direct ethernet connection to the iTrac® unit
- Effective patient management software that allows you to record and monitor patient progress
- Valuable report tool that allows you to print professional treatment recommendation and progress reports
- Variable rate progressive traction specifically designed to match viscoelastic property of soft tissues, maximizes patient comfort and effectiveness of traction treatments
- ADA compliant seat with black upholstery and deboss logo



The **iTrac® Spine Remodeling System** is a modern and effective tool for restoring the cervical curve and reducing forward head posture. The comfortable, computer-controlled treatments allow patients to achieve structural correction and truly address the causes of their symptoms. The software and device are both extremely user-friendly to the doctor and assistant thereby enhancing the modern chiropractic practice and taking it to a premier level of patient care.

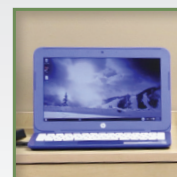


Patented iTrac® technology offers Variable Rate Progressive Traction™

- **Precise Computer Control** results in consistent, repeatable treatments.
- **Digital Data Processing** and file storage allows instant development, administration and viewing of patient treatments plans.
- **State-of-the-Art** ergonomic design enhances your modern office environment.



Fulcrum/Traction
Adjustment



Computer



Height
Adjustment



Head capture
piece



**Free 90 Days
of Clinical
Support** with
Dr. Jarrod
Nichols included
with purchase.

Apollo LASER THERAPY



BEST SELLER



AP2-DT-5000-C
2-channel desktop unit
shown with 5000mW probe

Apollo Desktop Laser Unit

2 Channel Desktop with choice of
500mW, or 3,4 or 5,000mW probe
9"W x 11.25"D x 4.5"H

- Heavy-duty construction for office and clinic environments
- Probe holders on both sides of the unit that can accommodate two probes and both right and left handed practitioners
- Elevated face for easy viewing and control
- 2 timers allow you to treat 2 patients at the same time



AP2-PT-3000-C
Portable unit
shown with
3000mW probe

Apollo Portable Laser Unit

Portable Control Unit with choice of
500mW or 3,000mW probe
5"W x 9"D x 2.5"H

- Weighing only 2.3 pounds, the Apollo laser is the lightest, most powerful portable laser you can buy
- Custom carrying case allows for easy travel from office to office and out in the field
- User replaceable battery
- Heavy-duty construction for office and clinic environments



HH2000 Hand Held
2000mW
Portable Unit

Apollo 2,000 mW Cold Laser

Low Level Laser therapy just became more flexible.
Experience the freedom of this incredible new device.
3.5"W x 6"D x 1"H

- Small, lightweight unit fits in the palm of your hand
- Simple on and off button, no programming necessary
- Non-invasive, safe way to manage pain without negative side effects
- Can operate from wall power or small battery pack
- Rechargeable



3, 4 & 5,000mW Point Probes

810nm Infrared Cluster probes

3,000 mW (4x750mW)
4,000 mW (4x1000mW)
5,000 mW (4x1250mW)

Apollo uses premium medical grade Class 4 laser diodes that provide extra long life and reliability. The probes are made from aerospace grade aluminum which means cool, durable performance.



500mW Point Probe

Hand, Small Area Laser

The 500mW point probe was designed specifically to reach those difficult to reach areas or areas with less tissue to penetrate such as hands, feet, trigger points and auricular areas.
Optional fine tip shown.



**Free 90 Days
of Clinical
Support** with
Dr. Curtis

Turchin included
with purchase.

Therapy Table SERIES

Custom build your wood treatment table to meet the specific needs of your practice. Each table comes standard with solid hardwood legs and base, H-brace construction, thick 3/4" plywood top, comfortable 2" high density foam cushion, softly rounded corners and dual-bolted leg assembly that folds down for easy shipping. Make it your own by adding length or width, shelves or a cabinet that can be mounted on either end. Patient-friendly customizations include a nose hole and 70° manual lift back with 6 position elevation.



TESS shown
with options

TESS shown
with options



TESS-2772
27" Lift Back Cushion

FEATURES:

- Load Capacity: 550 lbs.
- Solid hardwood H-brace construction
- 2" High density foam flat, seamless cushion
- Rounded corners
- Dual-bolted leg assembly that folds down for convenient shipping

WOOD MAT TABLE

The **Wood Mat Table** is built for strength and stability exercise and other treatments. Our 4 Leg Mat table comes standard with solid hardwood on the base frame, four legs and supports with a thick plywood top construction. The mat table also features a layer of comfortable 1.5" high density foam with softly rounded corners and triple-bolted leg assembly for extra durability.

FEATURES:

- Load Capacity: 450 lbs.
- Sizes available: 4'x6', 4'x7' and 5'x7'
- Table height of 19"H
- Solid hardwood frame and 4 legs
- 3/4" Plywood top
- 1.5" High density foam cushion
- Rounded corners
- Triple-bolted leg assembly



MAT-4872-4L



Visit our website for more information

www.PHSmedicalsolutions.com

ME2000 - Elevating Table

Height 24" - 36"

Lifting capacity 400 lbs

Length 77"

Width 28"

Lift back option



ME2000

ME2001 - Bariatric Elevating Table

Height 24" - 36"

Lifting capacity 400 lbs

Length 84"

Width 40"



ME2001

All tables have a complete cabinet with 4 sliding doors and 1 foot pedal.

Visit our website for more information

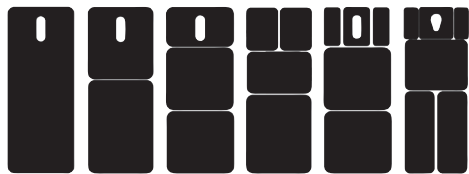
www.PHSmedicalsolutions.com

THERA-P TABLE

The ease of use, multiple options and sleek, yet durable design make the THERA-P line of electric treatment tables the choice of therapists and chiropractors everywhere. The THERA-P Electric Treatment Table is constructed of precision-cut flat and tube steel for durability and style.

FEATURES:

- Durable and stylish design: Featuring precision-cut flat and tube steel
- Whisper Quiet Lift System
- Rounded corners and 2" foam cushions
- Elevating foot switch
- Easy-to-operate caster system: Supports table functionality and movement
- Single foot control
- Table dimensions: 77" L x 27" W x 17" - 35" H
- Capacity: 400 lbs



PT1101 PT1102 PT1103 PT1107 PT1105 PT1106

SIX TOP OPTIONS:

Support a variety of therapists' needs



PT1103 THERA-P

Electric Lift MASSAGE TABLES

#1 BEST SELLER

Pro BASIC

Height Range of 18" - 34"

FEATURES:

- Dual Action Face Rest and pillow
- Standard single foot pedal
- Dual end accessory ports
- 3" foam system
- Durable precision cut steel base
- Whisper quiet lift system
- Optional breast or prenatal recesses
- Height range: 18" - 34"
- Capacity: 550 lbs
- Available in 28" or 30" widths

Our Basic model has a classic design that includes a dual-action face rest, pillow (with face rest holes on both ends of the table for added convenience), 3-inch thick foam system, plus a standard single foot pedal for height adjustment. Add breast recesses or prenatal options, if desired.



**CUSTOM
CRAFTWORKS**
A Brand Of Pivotal Health Solutions

ELPro

Hands Free Electric TABLES

Height Range of 17" - 35"

Controlling the height of your table has never been easier than with our new Hands Free Foot Bar Control!

The Hands Free dual foot bar control allows manual therapists to move freely around the surface of the table without losing contact with their client. Simply push up gently with the top of your toe to lower the table and step down to raise the table to just the right height for your treatment. The heavy duty steel construction is extremely durable yet visually appealing. No more tripping or rolling over foot pedals and wires. No more reaching and stretching to reach the pedal.

This amazing feature is a must for small spaces. The easy-to-operate caster system makes it a breeze to move around the office when needed.



Hands Free
Basic
Thera-P



Hands Free
Lift Back
TThera-P



Hands Free
Deluxe
SThera-P

Visit our website for more information

www.CustomCraftworks.com

Portable MASSAGE TABLES

Heritage TABLE

Height Range of 23" - 34"

FEATURES:

- Shiatsu release cables
- Solid beech frame
- Capacity: 550 lbs
- Dual end accessory ports
- Table dimensions: 73" L x 30" W
- Reiki end panels
- Height range: 23" - 34"
- Table weight: 35 lbs

The Heritage table offers rounded corners, dual knobs, a strong and flat working surface, and Reiki end panels on each end increasing your mobility all around the table. With the Shiatsu release cables, this table can easily lay flat on the floor. This feature-filled table is an unbelievable value.



19301

#1 BEST SELLER



19302

Destiny Lift Back TABLE

Height Range of 23" - 32"

The Destiny is a multi-purpose portable table that allows you to expand your menu of choices to include all forms of traditional massage, reflexology, facials and waxing. The manual lift back mechanism easily adjusts to 10 different positions.

The Destiny comes with a Carry Case, Front Arm Sling and Classic Adjustable Face Rest and Cushion, and a 2.5" thick multi-layered foam system.

FEATURES:

- Table weight: 43 lbs
- Width 30"
- Load rating: 550 lbs
- Length: 73"
- Reiki end panels
- Rounded corners
- Dual-end accessory ports
- Dual knobs
- 10-position elevating lift back
- Solid beech wood frame

Challenger Aluminum Massage TABLE

The new portable Challenger aluminum massage table is rugged yet lightweight and functional. It comes standard with a 3" thick multi-layered foam system, rounded corners and adjustable height leg system. In addition, this table offers an aluminum frame with finger-joint craftsmanship and auto-hold hinge system. With a weight of only 30 lbs. and load rating of 600 lbs., the features on this durable table will make it the only table you want to travel with.



19391

BASIC PRO PORTABLE CHIROPRACTIC TABLE

Beautifully portable, the Basic Pro portable chiropractic table is tough enough to withstand the requirements of the most demanding use. It features both thoracic and pelvic drops, adjustable headpiece and a height range of 18.5"-22.4".



Basic Pro

FEATURES:

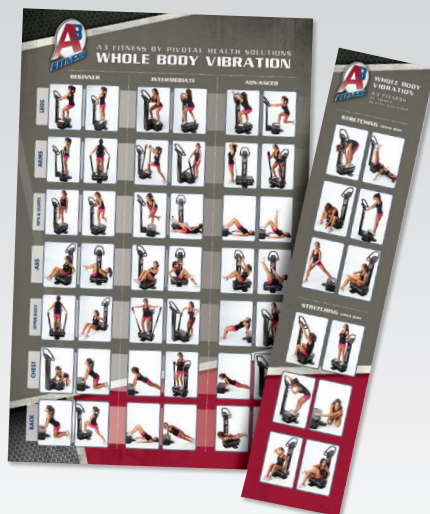
- 2" Thick multi-layered firm foam system
- Adjustable ankle extension
- Adjustable 5 angled headpiece
- Paper holder
- Folding leg construction
- Weight capacity: 400 lbs
- Table dimensions: 70" L x 21.5" W
- Folded table dimensions: 37"L x 21"W x 8"H
- Black upholstery only
- Thoracic and pelvic drops
- Hand rests
- Narrow shoulder design
- Carry case
- Table weight: 46 lbs
- Ships UPS or FedEx

WHOLE BODY VIBRATION THERAPY

Whether you want to reduce weight, improve flexibility or even improve your golf swing, the A3 Vibration platform will help you reach your goals. Vibration training is low impact and gentle, yet unbelievably effective. Anyone, regardless of their age or fitness level, can now benefit from exercising without straining their joints or other tissues.

V-1000 Dimension: 36.7"L x 29.5"W x 56.1"H

27
Exercise
Postures



V-1000



FMSTtools

FMST TOOLS

Fluid Motion Soft Tissue Tools are the soft tissue mobilization tools that can take myofascial manipulation and mobilization to the next level in your practice. The design of the two tools available enables you, the practitioner, to work over all surfaces of the body quickly and easily. The tools help reduce scar tissue problems from old injuries/surgeries and achieve greater results with pain control, joint and muscle flexibility that many thought was unattainable.

FMST FEATURES

- Custom molded non-slip thumb grips create maximum angular pressure without over use by the practitioner.
- Ambidextrous design: no more switching through multiple tools to find the right edge or angle. Both tools are designed to be used on both sides and on every surface for increased compatibility of treatment on multiple body areas.



Accessories & SELF CARE TOOLS

OMNI Cervical Relief Pillow™



Use for comfortable, face-up positioning for massage, spa, or chiropractic treatment

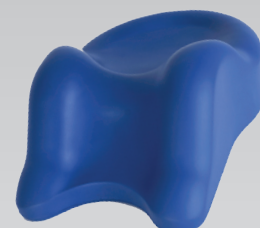


Neck is cradled and comfortably supported to achieve proper cervical curvature

The OMNI Cervical Relief Pillow uses an ergonomically contoured shape to comfortably "cradle" the head and neck allowing total relaxation of neck, shoulder, and back muscles.

- Relaxes neck, shoulder, and back tension
- Helps restore natural cervical curvature
- Comfortable and effective tractioning device
- Great for meditation, relaxation, relief from tension headaches and neck pain

DIMENSIONS: Overall Height - top to bottom: 13"
Overall Width - side to side: 9.5"
Overall Thickness: 5"



CEBL-1001

The Original PRESSURE POSITIVE THERAPEUTIC EVA FOAM ROLLER®

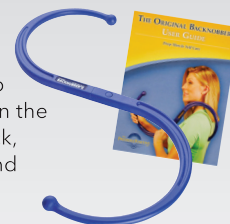
Foam rollers temporarily relieve tension, stretch out sore muscles and provide therapeutic self-massage using your body weight as the compressive force.



Foam13

The Original BACKNOBBER II®

The Original Backnobber® II uses its leverage to apply firm, deep pressure to knots in the muscles of the neck, shoulder, upper and lower back and to nearly any other location where muscle soreness may occur.



B2

The Original PALMASSAGER®



PALM

Hold it firmly in the palm of the hand and use one, two, or three of its round knobs to massage sore muscles.

The Original INDEX KNOBBER II®



IK2

A simple device designed to let you apply deep pressure to muscles within easy reach of your hand.

The Original KNOBBLE II®



K2

The new design of the all wood favorite. The Knobble II® gives your hand more power when you need it.

The Original VIBRASSAGER®



VIBRA

This innovative rolling massager is equipped with two knobbed wheels that actually feel like they vibrate as they roll across the back giving a delightful, relaxing massage.

The Original ORBIT MASSAGER®



ORBIT

The Orbit Massager® allows you to provide a stress releasing massage to the back, neck, shoulders and muscles throughout the body.

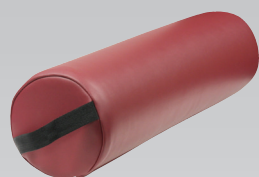
The Original JACKNOBBER II®



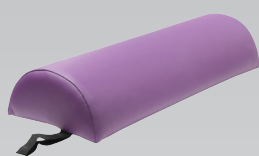
J2

An elegantly designed hand-held massage tool that can be used to provide a more pleasant and relaxing massage.

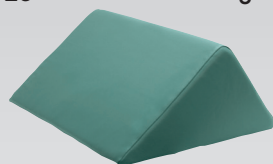
BOLSTERS & STOOLS



I9315
Solutions Round Bolster
6" x 25"



I9336
Solutions Half Round Bolster
3" x 25"



I9317
Solutions Triangle Bolster
18.5" x 10" x 26"



I9332
Solutions Rolling Stool
19"-24", 11 lbs.



PT4008
Clinical Rolling Stool



I9310
Solutions Rolling Stool with Back
19-24", 15 lbs.
Back rest 30-35"



PT4009
Saddle Stool

Pivotal PROFESSIONALS

Our Pivotal Professionals are here to **help support and grow your practice.**



Dr. Curtis Turchin
Apollo Lasers

Curtis Turchin, M.A., D.C. is considered one of the experts in the fields of gentle adjusting, soft tissue work, light and laser therapy. He has been using LEDs and lasers for approximately 34 years. Dr. Turchin has taught therapists and doctors in the U.S., Europe, Japan, Brazil, Canada, and Guatemala. He has a bachelor's degree in pre-medical studies and psychology from the University of Southern California, a master's degree in education from San Francisco State University, and a doctor of chiropractic from Palmer College. He is in private practice in Sebastopol, California, in the heart of the Sonoma wine country and teaches doctors and therapists his unique techniques.



Dr. Nathan Unruh
Business Trainer

Dr. Nathan Unruh is the Chief Experience Officer at SIDECAR, home of the world's leading chiropractic business training system: Overdrive. Dr. Unruh has been inspiring and educating chiropractic business owners for over 15 years. His methods of creating chiropractic affluence have helped hundreds of doctors build thriving practices and balanced lives that allow them to live out their chiropractic dream. He is also the Director of Chiropractic at Enville, a successful multi-location chiropractic business, where he and his team serve thousands of patients every month.



Dr. Brian Self
DOC Decompression

Brian currently owns three highly successful spinal decompression clinics in Arizona, West Virginia and Saudi Arabia, specializing in spinal decompression and cold laser techniques. He has consulted with over 300 clinics worldwide, and has performed more than 10,000 spinal decompression treatments.



Dr. Bryan Hawley
DOC Decompression

Dr. Bryan Hawley has served in the healthcare arena for over 20 years. He has several years of medical background experience as well as a Doctorate in Chiropractic and is Nationally Board Certified in Chiropractic care. His specialties are advanced cases of disc pathology and biomechanics and fitness. He currently is the international medical adviser to several medical device manufacturing companies and consults worldwide with other physicians on difficult cases via tele-med portals. He is also an NCBTMB certified instructor and adjunct faculty to several colleges nationwide.



Dr. Jarrod Nichols
iTrac Therapy

Dr. Jarrod Nichols is a chiropractic physician, entrepreneur and innovator. He received his doctorate from Palmer College of Chiropractic, graduating Magna Cum Laude in 2004. Dr. Nichols opened Nichols Chiropractic in 2005 where continues to treat patients. In 2006, he established Nichols Therapy Systems - an enterprise created to design and develop technologically advanced therapy products aimed at spinal curve & posture restoration. Dr. Nichols trains clinicians worldwide how to successfully integrate iTrac® Spine Remodeling into their clinical protocols.



Dr. Christian Reichardt
Whole Body Vibration

Christian has been a practicing doctor of chiropractics since 1983. A former disability evaluator for the State of California, he turned his attention from work-related injuries to sports injuries due to his own involvement in sports. He became one of the first certified chiropractic sports physicians in the U.S. in 1986, as well as a Diplomat of the American Academy of Pain Management. His practice in Santa Monica, Ca., draws a large clientele of Hollywood celebrities, as well as professional and amateur athletes. He has worked with a number of U.S. Olympic Team members and golf professionals. Christian has been using vibration technology for the last 15 years.



Dr. Jerad Bludorn, DC
FMST Tools

Jerad is a chiropractic physician and acupuncturist with an extensive background in soft-tissue therapy, functional movement and stability. He trained extensively with the Motion Palpation Institute as well as many other treatment techniques. He has more than 10 years' experience in private practice working with orthopedic surgeons and medical doctors to improve outcomes for his patients, and developed FMST Tools to assist him in improving his outcomes. Jerad has successfully implemented FMST Tools into many different types of practices, including physical therapy, chiropractic, massage therapy, occupational therapy and athletic training.

NEW PRODUCTS Coming Soon! KIOSKS, CABINETS & CARTS

PHS Chiropractic is here to cover every element of your practice.



Stor-Edge Multi-Purpose Carts



Kiosks

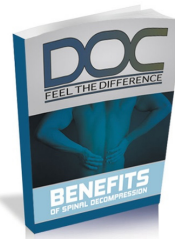


Stor-Edge Modality Carts



Stor-Edge Medical Cabinets

EDUCATION



Benefits of Spinal Decompression eBook

Dr. Brian Self, Decompression Pros



Massage Therapy is a Powerful Tool - Should you add it to your practice? Infographic

Steve Jurch, MA, ATC, LMT



WEBINAR: Treating the Untreatable With Light and Laser Therapy

Speaker: Curtis Turchin, DC



BLOG:

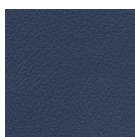
Adding a Chiropractic Assistant to Your Practice

EBOOKS, INFOGRAPHICS, WEBINARS & INFORMATIONAL BLOGS

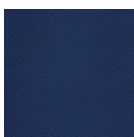
Visit our website to learn more about our products and to download other valuable education:

www.PHSChiropractic.com

Stock Vinyl Upholstery Colors



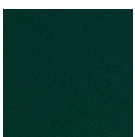
Blue Ridge



Imperial Blue



Burgundy



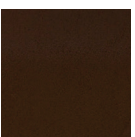
Forest



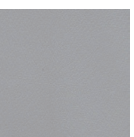
Lark



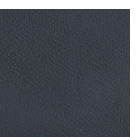
Putty



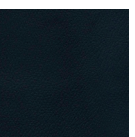
Mocha



Dove



Charcoal



Black



PHSChiropractic
by Pivotal Health Solutions

3003 9th Ave. SW, Watertown, SD 57201
www.PHSchiropractic.com
info@pivotalhealthsolutions.com
800.743.7738

Proudly keeping jobs in America.

PHS Chiropractic by Pivotal Health Solutions was formed with the mission to be the leading manufacturer of quality built, ergonomically sound chiropractic adjusting tables. The growth of our trusted brand began with the launch of Eurotech Tables in 2005 and the acquisition of the Chattanooga ErgoStyle table line in 2008.

PHS Chiropractic continues to evolve to build the best, most comprehensive chiropractic adjusting table lines in the market today. As you grow your practice, our tables grow with you. We've dreamed up every possible feature, from drops to elevating heights to adjustable head pieces—all easily added to your existing table to broaden your options.

All PHS Chiropractic Tables are proudly engineered and custom built in America. Let PHS Chiropractic help make your best, better!



Pivotal Health Solutions Brands:



CREATE YOUR PIVOTAL PRACTICE

See pg. 14